

Parent Handbook

St Paul's Catholic School & Sixth Form



2 2
0 0
2 2
5 6



—ST THOMAS—
AQUINAS
CATHOLIC MULTI-ACADEMY TRUST

Welcome

Dear Parents/Carers,
Welcome to St Paul's Catholic School. You will find us to be a warm inclusive community where we are inspired and motivated by our School Prayer "*To act justly, love tenderly and walk humbly*". We are one of 23 schools who all belong to the St Thomas Aquinas Catholic Multi Academy Trust. We are bound together by the Trust mission to "prepare all our young people for a wholesome, fulfilling and active life in the future making a valuable contribution to society."

We are committed to the education of the whole person and look to foster each student's gifts and talents whatever they may be.

This handbook contains essential information which I hope will prove useful to you as your child starts at our school. You will also find our website a valuable source of information. We prize open communication therefore if there is anything you are unsure of please telephone us or call into reception, where someone will be pleased to assist you.

We value and recognise your role as parents as the first educators of your children and our aim is to support you with this. We look forward to working in partnership with you as your child progresses through the school, we hope they will be very happy and fulfilled in their time with us.

Yours sincerely,



Mrs S Conaghan
Principal





Key Contents

- Mission Statement, school prayer & motto
- Key Contacts
- Spiritual Life
- The School Day
- Student Code of Conduct
- Classroom Expectations
- Dining Room Protocol
- Moving Around School
- School Uniform
- General Information
- Term Dates
- Privacy Notice



Mission Statement School Prayer & Motto

Mission Statement

St Paul's School is a Catholic family, a living, breathing reflection of the love of our God and neighbour.

We celebrate our diversity, seeking from each other mutual respect and high expectations.

Our mission and vision is to strive to fulfil our potential as disciples who grow in holiness, knowledge and dignity.

School Prayer

*This is what The Lord asks of you,
to act justly,
to love tenderly,
and to walk humbly with your god*

Micah:6

School Motto

"Let your light shine before others" Matthew 5



Key Contacts

Principal	Mrs S Conaghan
Vice Principal	Mrs J Laidler
Senior Assistant Principal & DSL	Mrs S Hodgson
Assistant Principal	Mrs F Bhana; Miss L Boyle
Chaplain	Rev Deacon Seamus O'Looskan
Head of Y7	Miss L Boyle
Assistant Head of Y7	Ms A Cunningham
Y7 Transition Lead	Mrs J Chavda
SENDCo	Miss L Boyle
PA to the Principal	Mrs C Moss
Operations Manager	Mr D Weston





Spiritual Life



Growth and understanding of the Catholic Faith is of key importance for the life of our School Community. The Chapel of Nativity is open all day for prayer with Mass celebrated throughout the year. Weekly Mass is celebrated every Thursday morning and form classes attend on a rota basis. There are lots of opportunities for prayer and liturgy throughout the year. Each year group attend a religious assembly weekly and we start every form time, with prayer and reflection.



Our school chaplain, Rev Deacon Seamus O'Looskan, supports students' personal and spiritual development and is available to regularly meet with and advise students. The Chaplaincy office is situated in Lydia's building. Students and staff are supported well with the growth of their faith. As well as many opportunities to take part in formal worship, students are encouraged to explore and develop their faith through RE and other enrichment activities.



We are part of a large Catholic Multi-Academy Trust and the school collaborates with the other schools and is supported by the Lead Lay Chaplain.

We respect students of every faith and celebrate our diversity every day. Our Muslim students and staff, have the opportunity and space to perform Friday prayers.



School day

Monday, Tuesday, Thursday and Friday

08.45 - 09.10	Registration & Form Time plus reading for all years
09.10 - 10.10	Lesson 1
10.10 - 11.10	Lesson 2
11.10 - 11.30	Break
11.30 - 12.30	Lesson 3
12.30 - 14.10	Lesson 4 (+ Lunch 1: 12.30 - 13.00)
12.30 - 14.10	Lesson 4 (+ Lunch 2: 13.05 - 13.35)
14.10 - 15.10	Lesson 5
15.10	School day finishes
15.30	Extra-curricular classes start

Wednesday

08.45 - 09.40	Registration & PSHE
09.45 - 10.35	Lesson 1
10.35 - 10.55	Break
10.55 - 11.50	Lesson 2
11.50 - 12.45	Lesson 3
12.45 - 14.15	Lesson 4 (+ Lunch 1: 12.45 - 13.15)
12.45 - 14.15	Lesson 4 (+ Lunch 2: 13.20 - 13.50)
14.15 - 15.10	Lesson 5
15.10	School day finishes
15.30	Extra-curricular classes start



Equipment

Your child will need the following items for all lessons:

Black; Blue; Purple
pens

Pencils

Pencil sharpener

Eraser

30cm ruler

Compass

Protractor

Scientific Calculator (The
approved Y7-Y11 is a Casio
FX-83; Sixth Form Casio
FX-991

Glue stick

Pencil crayons
(not available to purchase
from school)

*****Our school stationery shop is open daily 8:30-8:45am at Student Reception *****





Code of conduct



At St Paul's Catholic School and in the local community, students do whatever it takes to help create a safe respectful school. **We ask students to follow the code of conduct:**

- Follow instructions politely and calmly
- Treat everyone with respect and good manners
- Greet and speak to your teachers politely and respectfully
- Move around school in a calm and respectful manner
- Be on time to lessons and school
- Never damaging school property or drop litter
- Never insult, disrespect or swear at anyone and never using language which could hurt or offend others
- Never use sexualised behaviours including inappropriate touching



St Paul's Principles

- S** sit up and listen
- T** think before you speak
- P** please and thank you are compulsory
- A** always hold doors open
- U** use your eyes to make eye contact
- L** listen to others respectfully
- S** speak with manners at all times





Classroom expectations

Every second is precious. Students must be punctual to lessons. If they are two minutes late to each lesson every day that equates to 50 minutes per week and over 32 hours per academic year. Following our classroom expectations is vital so that more time can be spent learning. In order to support students to reach the expectations, teachers guide them to follow the strategies below. In classrooms, students will:

- Follow instructions the first time of asking
- Follow the behaviour for learning protocols, allowing teachers to teach and students to learn
- Work in silence when instructed to do so
- Stay on task and work hard even when they find work challenging
- Complete their homework as specified, to a good standard and on time
- Produce their best work
- Ensure books/folders to be neat and tidy
- Include the title and date and underline them
- Not graffiti/doodle on their books or folders
- Make corrections to their work where highlighted and improve their work after feedback

Teachers have a seating plan and students sit at the seat they have been allocated. They listen to every single word the teacher says very carefully especially to instructions. When students ask questions, they always put their hand and wait for the teacher to speak to them. Calling out is never permitted. Even if they have their hand raised, they have to wait for the teacher to choose them by name. If they are confused, or unsure what to do, they should let the teacher finish what he/she is saying and then put up their hand up to ask a question. Questioning is targeted, there is no opt out.

Sometimes students will receive detentions. Sometimes they may even be put into the Zacchaeus Room (Isolation room). This will be because their teachers have decided that their actions were rude or damaging to their education or that of others. Students may think the teacher was unfair. The teacher's decision is final. Students never answer back.



Dining room protocol

Lydia's serves delicious hot food daily. Menus offer a wide variety of choice and are changed termly. Cold food/snacks are available from the Café.

In order to treat everyone with respect in our Dining Room the following rules must be observed:

- Food purchased in the Restaurant must be eaten there and may not be taken around the school
- All food purchased in the Restaurant is carried on a tray
- The tables and chairs in the Restaurant remain as laid out and are not to be moved around. When you leave, place your chair under the table
- When finished, each person clears his/her own place, using the clearing stations and bins
- Bags should be placed safely as directed and never put on the dining tables

Café Protocol

We serve cold food such as sandwiches and wraps, fruit and healthy snacks in the café. Students should line up and wait to be served.

All food purchased in the restaurant and café is done so by using a thumbprint biometrics. We do not take cash as payment. Parents are asked to ensure that their child's ParentPay account is kept topped up.



Movement around school

When moving around or socialising at school, we do so in groups of no more than 3 or 4 people. Staff car parking areas and the area at the back of the sports hall, are out of bounds except during lessons when accompanied by a teacher.

- **Be Courteous:** Move around school taking care to respect other people and the buildings
- **Be Punctual:** Move to lessons immediately the bell sounds.
- **Be Organised:** Use lockers and water dispensers only before school, at break and lunch time
- **Be Quiet:** Move around the buildings and public areas inside and outside in a quiet and orderly way. Walk on your own, not in a group. Conversations should be at low volume. When waiting outside a classroom for a teacher, students should wait quietly
- **Be safe:** Never push people or try to push through a crowd





Uniform

All uniform must be worn correctly with care and pride at all times including travel to and from home.

- **Black school blazer with school badge OR black v-neck jumper with school badge**
- White shirt buttoned fully to the neck with a school tie
- Black school uniform trousers OR **St Paul's Tartan school skirt** (knee length)
- NO SKINNY TROUSERS, JEANS OR LEGGINGS.
- Optional plain black v-neck jumper which **MUST** be worn with a black school blazer with badge
- Long black socks or black tights. Plain black or white ankle socks may be worn in warm weather.
- Footwear should be all black without visible logos. **NO BOOTS.**

PE Kit

- Black leggings
- **Black Fleece**
- **PE Fitness Top**
- **Multi Sports Top**
- Black sports shorts or skort NO CYCLING SHORTS
- Trainers
- Football boots
- Shin Pads
- Gum Shield
- Water bottle

Uniform **highlighted in red** can only be purchased from Schoolwear Solutions:

64 London Road, Oadby, Leicester, LE2 5DH - Telephone 0116 216 0665.

website - **www.schoolwearsolutions.com**

email - **oadby@newplansolutions.co.uk**

Opening times are 9am-5pm Monday to Saturday. (June – October)

Closed on Thursdays November to May.

We strongly recommend you make an appointment at Schoolwear Solutions as it becomes very busy during the school summer holiday and wait times can be up to 2 hours, without an appointment. Ties and aprons can be purchased from the school office.



General uniform information

Parents are reminded:

- Of the importance of labelling all items clearly with owner's name
- That variation of school uniform is often attempted by pupils who try to reassure their parents that *"they all do it"*. Please ignore such reports unless backed by an official school letter
- That in emergencies, when you are obliged to send your child to school wearing incorrect clothing, a written note of explanation is necessary.

Acceptable jewellery

- Crucifix necklace
- Earrings – 1 stud in each ear
- One ring
- One watch

The following items are not permissible:

- Hoodies/Sweatshirts
- Bracelets
- Visibly noticeable makeup or nail varnish
- Hair colour should be within the range of natural hair colouring (no bright colours and no extreme styles)
- Hair styles should be moderate and appropriate for school as agreed by the Principal. No haircut should be clipped below '2'
- No facial piercings are allowed except for cultural/religious reasons
- False eyelashes and/or false nails
- No coloured nail polish. French manicure/white tips are permitted.

Baseball caps and other hats are not permitted at any time. Scarfs including bandanas and woollen hats may only be worn in extreme weather conditions (snow). Hats, gloves and scarfs may not be worn indoors.

Following consultation with EqualiTeach Du Rags may be worn by those students whose cultural identity, recognise Du Rags as being significantly important. They should be black, gold or white in colour which is in keeping with the school uniform. Headscarfs worn for religious reasons should also be black, white or gold.

Detention is issued for those not wearing their uniform correctly.

If a student attends school dressed inappropriately, we will contact home and reserve the right to place the student in isolation until the issue has been rectified and our expectations have been met.



General information

Assessments

At KS3 students' progress is measured from their KS2 SAT scores. In KS3 summative assessments students will be given a progress level. There are three:

1. Emerging – Students are working towards their expected attainment.
2. Expected – Students are working at their expected attainment.
3. Exceeding – Students are working in greater depth.

At KS4, students that follow academic 9-1 GCSE's will be assessed using 9 – 1. 9 is the highest Grade and 1 is the lowest. Students that follow a vocational course such as BTEC, assessments will be measured using L2D* - L1P.

At KS5, students' attainment will be assessed using traditional grades A* - U. Students that select vocational subjects, will be assessed using D – P.

Academic Achievement Targets

Every student is given a Minimum Expected Grade (MEG) at GCSE and A Level. Throughout the academic year, students' understanding will be checked through frequent formative assessments in class. These range from quizzes to multiple choice questions to class discussions. Three times a year students' progress will be recorded as a summative assessment and reported to parents through Arbor (All parents will receive a login). From the summative assessments all teachers will be able to give additional support and targeted intervention to any students that are not making their Minimum Expected Grade.

Autistic Spectrum Disorder (ASD)

Autistic Spectrum Disorder (ASD) is a condition that affects social interaction, communication, interests and behaviour. Students within school with ASD are supported by staff using ASD friendly strategies as recommended by the Local Authority 'Inclusive Provision'. Some students will receive additional support from external agencies.



General information continued

Assembly

Assemblies take place in the Theatre every week for every year group.

Attendance

Full attendance is extremely important to each student's success and at St Paul's Catholic School, we expect students to attend fully during term time. All students should be onsite by 8.45am. Students with 100% attendance receive Attendance Certificates at the end of each term.

In the case of genuine illness, please telephone the school office on 0116 2414057, **Option 1 'Absences', before 9am**. If your child is ill for more than one day, it is important that you ring school each morning, if they are not well enough to attend.

Should your child be ill for more than 3 consecutive days, we will require medical evidence (unless your child is on our Medical Evidence list, then it will be required from day 1). If this cannot be provided, your child will be marked as an Unauthorised Absence. Any queries or concerns regarding your child's attendance should be directed to Miss Bates, the school Attendance Officer in the first instance.

Behaviour

The school has very high expectations of students' behaviour and conduct. This applies in class, around the school and en route to and from school and at all times, including when on-line. We use the Choice – Chance – Consequence system.

Part of our behaviour curriculum is the expectation of excellent manners and communication. Both of these are taught explicitly in form time and reinforced in lessons and around the school site. A small number of students need additional support with behaviour education and this is provided in a variety of ways, e.g. through closer monitoring by Head of Faculty or Head of Year or through extra support, by the pastoral support team. The school also works in collaboration with other Leicester schools in an 'Attendance and Behaviour Support Partnership'. Through this partnership, we provide for the education of a small number of students at the Carisbrooke Learning Centre and the Leicester Partnership School which provide specialist support for behaviour education in small group settings. St Paul's staff are trained to use physical intervention to restrain a student should this be necessary. In practice this is exceptionally rare.

The Behaviour Policy can be found on the school website and a condensed parent version can also be found on the website. **www.st-pauls.leicester.sch.uk/policies**



General information continued

Breakfast Club

The school sells breakfast items for students between 8.25am and 8.40am.

British Values

In recent years the government has introduced a set of Fundamental British values which are delivered through the curriculum in all English schools. These are Democracy, the rule of law, individual liberty, mutual respect for and tolerance of those with different faiths and beliefs and for those without faith.

At St Paul's these values form part of the Christian values which underpin the school's ethos and they are part of the curriculum in a number of subjects both explicitly and implicitly. We expect all governors, staff, students and parents to respectfully support the teaching and living out of British values at the school.

In particular, we foster British values by helping students to develop their self-knowledge, self-esteem and self-confidence and to accept responsibility for their behaviour, show initiative and to understand how they can contribute positively, to the lives of those living and working in the locality of the school and to society more widely. We help students to distinguish right from wrong and to respect the civil and criminal law of England and for English public institutions and services. We try to further promote harmony between different cultural traditions, by enabling students to acquire an appreciation of and respect for their own and other culture and we encourage respect for democracy and support for participation, in the democratic processes. Further information can be found here:

www.st-pauls.leicester.sch.uk/curriculum/personal-development

Bullying

At St Paul's we take reports of bullying very seriously. Bullying contravenes our belief in the value and uniqueness of each person and we have clear structures in place, to deal with bullying.

Our bullying policy is available on the school website. Students receive anti-bullying education throughout their school life and our pastoral system supports this. Students are encouraged to report any instance of bullying to any member of staff where the matter will be dealt with - initially seeking to promote understanding and reconciliation.



General information continued

Calculator

The school calculator for Years 7-11 is a Casio FX-83; Sixth Form use a Casio FX-991 and both models can be purchased online or from the School Office. It is most helpful if students use this calculator to avoid confusion.

Cashless Catering/ParentPay

The school operates a Cashless Catering system for payments via Arbor and is a secure platform whereby parents are able to pay for dinner money, printing/photocopying, school trips and other school resources. Parents are able to pay online using your credit or debit card.

Arbor is easy-to-use and offers the freedom to make online payments whenever and wherever you like, benefits are:

- the technology used is of the highest internet security available ensuring that your money will reach school safely – offering you peace of mind
- payments can be made by credit/debit card
- full payment histories and statements are available to you securely online at anytime
- your children will not have to worry about losing money at school

All new students and parents will receive account activation details.

If you have any questions, please contact the school office.

Parents should ensure that there is sufficient credit on their child's account prior to them purchasing food from the dining room.

CCTV

Closed circuit television recording operates throughout the school site. Images are stored for 28 days. It is the policy of the school not to release CCTV recordings to anyone, other than the police and as part of a police investigation.



General information continued

Communication with Parents/Carers

We look forward to meeting you, at parent's meetings which are a vital point of contact. Information is displayed on the website. We also send emails or text messages to parents if there is an emergency or to remind/signal important events. Parents are sent termly newsletters from our Principal, Mrs. Conaghan, providing important updates and news items along with advanced notice of key dates. Contact data is held on the school's database. Parents must notify us immediately of changes to phone numbers, email addresses etc. Should a parent with parental responsibility not be living at the same address as their child, both parents will receive those letters which are sent via email. In this case, a note giving the details should be sent to the Principal signed by both parents to give authorisation.

Computer network/e-safety

St Paul's Catholic School values the incredible learning opportunities provided by ICT applications and the Internet. To ensure safe and responsible use, all students and parents are required to sign the ICT and Internet Protocol Agreement, which outlines expectations for appropriate online behaviour. Each student is issued a unique password to access the school network, including filtered Internet access. Passwords must be kept private and should never be shared with anyone. The school's Acceptable Use Policy (AUP) sets clear guidelines on the responsible use of digital resources, covering all school devices, both inside and outside of school, as well as any personal devices used to access the school's network or logins.

Parents are encouraged to discuss responsible Internet use with their child and to supervise their online activity outside of school. It is important to note that social networking sites legally require users to be at least 13 years old. You can access our Online Safety and Acceptable use policies on our school website under policies <https://www.st-pauls.leicester.sch.uk/policies/>

Chaplain

The School's Chaplain, Rev Deacon Seamus O' Looskan, helps to lead the school spiritually and supports students' personal and spiritual development. Deacon Seamus is regularly available to meet with and advise students.



General information continued

Damage to School Property

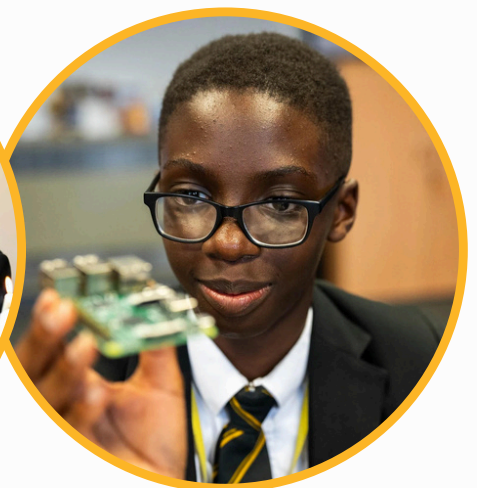
Any deliberate damage to school property e.g. by graffiti etc. is a serious break of discipline. It will be followed up and parents/carers are expected to contribute to the cost of the repairs. Students involved in damaging school property could be subject to sanctions such as suspension, detention or community service after school.

Data Handling

Each year the school will ask you to confirm the personal information we hold about you and your child(ren). Please check for accuracy and return the Data Collection Sheet promptly to the school office.

Detentions

Occasionally students may be set a C2 (30 minutes) or C3 (1 hour) detention after school. An SLT detention (Mondays till 5pm) will be issued for non attendance at a C3 detention. Detentions are non-negotiable and parents will be informed 24 hours in advance by text and email. All detentions are set centrally and notifications of date, time, room and duration will be sent to both you and your child, directly using the Arbor app. It is essential you have the app on your phone with notifications enabled. Full details can be found in our Behaviour Policy.





General information continued

Dining Arrangements

The restaurant and café both have outdoor and indoor seating. Packed lunches may also be eaten there.

Diversity & Inclusion at St Paul's

Our approach to Diversity and Inclusion is founded on the following principles of Catholic Social Teaching:

- **Human Dignity** – recognising that all people are made in the image of God
- **Common Good** – creating a space which allows all people to benefit equally
- **Solidarity** – standing with those who are more likely to be marginalised by society
- **Participation** – making sure that everyone has a voice in our community

We have two weeks where we celebrate 'Diversity and Inclusion' with a special timetable. During these weeks, we explore themes covered by the Equality Act of 2010 and the 9 protected characteristics of age, disability (including mental health and invisible disabilities), gender reassignment, marriage and civil partnership, pregnancy and maternity, race, religion or belief, sex, and sexual orientation. Our celebrations involve:

- Hearing from guest speakers for assemblies/workshops
- Distinct 'Diversity' lessons in each subject/form time activities
- A themed menu in Lydia's
- Non-Uniform/Cultural Dress days and parades
- Student presentations on their interests in these areas
- Inclusive prayer and worship
- Fundraising

We have also founded a Diversity Group, made up of staff and students, who are committed to embedding our work on inclusion throughout the entire academic year. These opportunities will enable our students to put their faith into action and fully embrace the call from Christ to love all of our neighbours.



General information continued

Enrichment

At St Paul's, we believe that education goes beyond the classroom; providing our students with a well-rounded learning experience through our enrichment program. Our commitment to enrichment extends beyond academic excellence, nurturing the development of their spiritual, moral, social and cultural skills, talents, appreciation of democracy, the rule of law, British Values, and passions that lie beyond the core curriculum. Our enrichment program is designed to ignite curiosity, foster creativity, and promote holistic growth among our students. From arts and culture to sports and community engagement, we offer a diverse range of opportunities to explore and excel in various areas of interest, there is something for everyone! Through our enrichment activities, students have the chance to uncover hidden talents, develop leadership skills, and cultivate a lifelong love for learning. Whether it's joining our coding club, participating in our school annual drama production, or engaging in our fundraising efforts, our students have ample paths to discover their passions and make meaningful contributions to the community. All staff guide students on their enrichment journey, providing mentorship, encouragement, and support along the way. We believe that enrichment empower students to unlock their full potential. St Paul's are proud of our commitment to providing a comprehensive education that not only prepares students for academic success but also prepares them with the skills and experiences necessary to thrive in an ever-changing world. Students can find all Enrichment updates on our school website:

www.st-pauls.leicester.sch.uk/students/enrichment where they have a link to our internal Enrichment pages (they will need to log in with their school Office 365 login) as well as an overview of clubs currently running.





General information continued

Expressing concerns

If you are worried about a situation to do with an academic or social matter please contact your child's Form Tutor in the first instance. More serious matters (e.g. bullying) may be dealt with immediately by contacting your child's Form Tutor or Head of Year. Should you have very serious concerns e.g. about the conduct of a member of staff, please write a letter briefly explaining the situation to the Principal, Mrs Conaghan. Your letter will be acknowledged and you will be invited to discuss your concerns with a member of our Senior Leadership Team. If the matter is a concern where you think that students are at actual risk of imminent harm, please telephone the school immediately and ask to speak with the Designated Safeguarding Lead, Mrs Warrilow, or the Principal, Mrs Conaghan. All teachers are in class for up to 23 hours each week. The Head of Year and Assistant Head of Year also have a heavy teaching commitment. Please note it is not always possible to return your call the same day but our policy is that you should get an acknowledgement or response within 24 hours.

We are unable to see parents without an appointment unless in exceptional circumstances.

First Aid/Children who become unwell

Our team of First Aiders will take care of students if feeling unwell and if necessary, will contact the main carer. It is imperative that all contact details are kept up to date. Should you change address or contact telephone numbers, please let the school office know immediately. Please note that students are not allowed to call their parents directly and ask to be collected from school if they are feeling unwell.

We do not permit children who are sick to walk home or catch a service bus under any circumstances. Should a parent wish their child to go home in a taxi the school can arrange this, however parents must meet the charge when it arrives at their home. Should we be unable to make parental contact, the child will be asked to wait in the medical room until we can contact a parent. All children leaving school due to illness will need to sign out at Reception.



General information continued

Free School Meals

One in five students in England is entitled to a free school meal. On average a family with two children spends over £600 per school year on school meals. To check your entitlement, contact the Free School Meals Service at Leicester City Council on 0116 454 1009 – option 3. More information can be obtained via the school website:

www.st-pauls.leicester.sch.uk/parents/free-school-meals

Getting to school

Students are encouraged to cycle to school. There is a bike shed at school but pupils should bring in a secure lock for their bike. Students cycling to school **must** wear a cycle helmet. All cyclists must dismount and wheel their bicycles on site.

Confidence Buses supply all the home to school transport to St Paul's. Full details of the routes, timings, costs and sign up details are available via **www.confidencebus.co.uk/school-bus-routes** Please note that the contract is between parent and Confidence Buses should you wish to use this provider.

We also run a school minibus for the South Leicestershire villages. If you are interested in this service, please contact Dan Weston: **dweston@st-pauls.leicester.sch.uk** at the school.

Healthy Eating

St Paul's has Healthy School Status and we strongly encourage students to live a healthy lifestyle. Consequently, packed lunches must be healthy; parents must decide what this means to them and make the decision accordingly. Students may carry a 75cl water bottle around school with them and use this discreetly during lessons. Water is available from the water fountains at break and lunch times only.



General information continued

Holiday Requests/Leave of Absence

Schools can no longer authorise leave of absence unless an application has been made in advance by the parent with whom the pupil normally resides and the Principal considers that there are exceptional circumstances relating to the application. If you wish to make a request for leave of absence, in exceptional circumstances, please complete the 'Leave of absence request form' found on the Attendance page on the school website. This must be emailed to **attendance@st-pauls.leicester.sch.uk** at least 14 days before the date you wish to remove your child from school. A decision will be provided to you in writing.

Where there is unauthorised absence, Penalty Notices will be issued. ***The law with regard to Penalty Notices is as follows:*** The periods during which a Penalty Notice should be paid are shortening. For unauthorised absence the fine for school absences will be increased to £80 if paid within 21 days or £160 if paid within 28 days per parent per child. Full details including our Attendance policy can be found on our website <https://www.st-pauls.leicester.sch.uk/parents/attendance/>

Homework

Students have access to SatchelOne where they can see and complete all homework set. Parents also get a log in to the site so they can monitor their child's homework.

Homework Club

There is a supervised Homework Club for Year's 7-9 from 3.30pm - 4.30pm Monday - Thursday. The Homework Club provides the opportunity for students to complete any homework projects, use the school library resources and internet, with staff available to offer assistance if required.

Home School Agreement

This is shared and signed by the school, parents and students annually.



General information continued

Information for Students and Parents

Notices for students are given each morning by Form Tutors during registration or in Assembly. Other notices are published on our website - www.st-paul's.leicester.sch.uk. Letters such as praise, school visits and events are sent by email to parents so please ensure the school holds the correct email for you. Newsletters from the Principal are also emailed to all parents termly and uploaded to our school website <https://www.st-pauls.leicester.sch.uk/parents/newsletters/>

Keeping your child safe on line

As a school we fully embrace the many benefits of technology and students use the internet frequently to access learning materials. However, as your child journeys through secondary school they will need help from home as well as school to navigate away from some of the dangers of the internet including distorted presentations of human relationships and radicalisation from terrorist groups. You should maintain an honest dialogue with them about their online use and explain the dangers to them. We will also do so in school regularly. Information about online safety can be accessed on our school website <https://www.st-pauls.leicester.sch.uk/parents/e-safety-and-reporting/>

You will find e-safety information sheets and 'conversation starters' to prompt for discussions with your child. There are also links for students to learn more about online safety. We recommend parents take note of the advice offered on the following government websites:

parentzone.org.uk

educateagainsthate.com/parents

thinkuknow.co.uk

Key Stages

We have a 5 year learning journey but you may sometimes hear Years 7- 8 referred to as Key Stage 3 (KS3) and Years 9-11 as Key Stage 4 (KS4).



General information continued

Lanyards and Photo ID Card

All students are issued with a photo ID card and lanyard at the beginning of the school year which must be worn at all times. If either of these are lost or damaged, replacements must be purchased from the school office costing, £2. Students can pay 'cash' at the school office or parents can make payment via Arbor. Lanyards are part of the school uniform and must be worn at all times.

Library

The school library is open Monday - Friday from 8.30am – 3.10pm. The library is also open during break and lunch time for some year groups. The library contains a varied collection of fiction and non-fiction books as well as reference books and computers. Students may borrow up to 2 books in years 7-11 and 4 books in the Sixth Form and are issued for 2 weeks. For further information please contact Mrs. Tutla, the school Librarian.

Lockers

Lockers are available for use, from the beginning of Year 7 at a cost of £20 and are available until the student reaches the end of Year 9. They are allocated on a 'first come, first served' basis and payment is made via Arbor. Replacement keys can be ordered from the school office, at a cost of £4.90. If you wish to **reserve a locker** for your child prior to the start of the new school year, please email **office@st-pauls.leicester.sch.uk** with your child's name. Please note, keys will not be issued until payment has been received.

Lost Property

Any lost property is handed to the school office in the first instance. Please can we remind all parents of the importance of labelling all items with the student's name, to ensure that anything found is swiftly returned to them as soon as possible and to help parents not to incur, any additional expense in replacing items.



General information continued

Meetings and Telephone Calls

We may request to speak to or meet with parents from time to time. Please let us know if you cannot attend a specially arranged meeting. If you do attend a meeting with our staff, we would be grateful if you could be on time. We understand that meetings can sometimes be stressful, but we do expect that all visitors conduct themselves with good manners. Staff are instructed to end meetings or telephone calls where they are subjected to abusive or threatening language or outbursts of temper. Some meetings lead to a special plan called "Pastoral Support Plan" being put in place to help support a student's educational or emotional need. This sometimes includes inter agency support.

Medical Appointments

Whenever possible, medical and dental appointments should be made out of school hours or in school holidays. However, if this is not possible and your child has a medical appointment during the school day or comes in late due to an appointment, parents **MUST** call/email the school attendance officer or send a letter into school at least 24 hours **before the appointment**. This will ensure that your child receives the correct mark on the register and will enable them to leave school without first ringing the parent/carer for confirmation. Your child must also complete the signing out sheet in reception.

It is a condition of Health & Safety and the school's legal responsibility that we know where our students are, at all times.

Medical Conditions - Healthcare

The school works in collaboration with parents/carers and the Health Service and Social Services, to ensure that students are supported to live healthy lifestyles and to manage all medical needs. Advice and guidance on health matters is always available in school via the School Nursing service and a number of aspects of school life, support student health in the broadest sense.



General information continued

Mobile Phones/Portable Internet Devices

Mobile phones are not permitted in school for Years 7-11. Phones can be handed into the school office for safekeeping and collected at the end of the day. They are not to be seen or used on the school site including on the school drive. Please refer to our mobile phone protocols found in our Behaviour Policy on our website <https://www.st-pauls.leicester.sch.uk/policies/>

If a student is seen with a phone they will be asked to hand it over and it will stay in the school safe, until a parent/carer collects it. Students who refuse to hand over their phone will be suspended. Phones will not be given back to students at the end of the school day. As a concession to the policy, we will return a phone if the student can prove that their bus pass is on it. If we do return a phone for this reason, the student will be issued with an SLT detention by way of a sanction instead; the SLT detention is served on a Monday after school until 5pm. We will always text parents to inform them that their child's phone has been confiscated.

Students should never use their phones to contact their parents during the school day; if we find this has happened the procedures above will apply.

Sixth Form are permitted to use mobile phones in the Sixth Form Common Room only.

If parents/carers need to contact the student in an emergency during the school day, they must phone the school office and the student will be sent for. If students need to contact parents/carers urgently, they should go to their Head of Year or Form Tutor who will make the call for them. Mobile phones should not be used to contact parents when the child is unwell. Students should report to a member of staff who will contact parents, if necessary. We accept no responsibility for lost or broken phones or phones that go missing.

Parents' Evenings

All students in Years 7-13 have one parents evening a year, with an extra tutor evening in the Advent Term for Year 7 and an extra parents evening for students in Year 11. These evenings give parents an opportunity to speak to each class teacher and run from 3:40-6:40pm. Virtual meetings take place via video call and each appointment lasts for 5 minutes. Appointments are booked online and you will receive a link to the website prior to the evening with confirmation of timings.



General information continued

Photography

Still and moving photography is used in school for a variety of reasons. This includes taking photographic evidence for the completion of examination submissions. Photography is also used to illustrate student work and to celebrate success. Photographs of students are published on the school website. Students are not normally named in these photographs. Occasionally professional video recordings may be made of students taking part in Performing Arts activities.

Parents/carers who wish their students not to be photographed for official school purposes are asked to contact Mrs Hodgson in writing .

Prohibited Items

There are a number of items, which are not permitted in school. Possession of these items carries a consequence that students can expect if they are in breach of the school rules. In order to encourage honesty, the consequence for bringing any of these items into school may be reduced if students own up before a search takes place:

- Chewing gum
- Energy/fizzy drinks
- Alcohol
- Matches
- Lighters
- Cigarettes/cigarette papers/vapes
- Electronic cigarettes ('e-cigarettes' or 'e-lites')
- Mobile Phones, MP3 players and hand-held games consoles
- Laser pens
- Aerosols
- Illegal substances
- Weapons including replica items



General information continued

Punctuality

All students must arrive to school and all lessons on time. For whatever reason, if a student is late for registration they must sign in on the late sheet at the school office. It is essential that we know who is in school in case of emergency. Any students who are not in school by 9.10am when registers close and we have not been informed of the reason, will automatically receive an unauthorised absence mark and a text home from the Attendance Officer:

- A student who arrives late before the register has closed will be marked as late, using the appropriate code (L).
- After the register has closed, students will be marked as absent, using the appropriate code (U). Punctuality is monitored on a daily basis.
- Students that are late to school twice in a week will receive a C2 after school detention, three times late, will incur a 1 hour after school detention, whilst students who are late to class, receive sanctions on Arbor.
- Parents/carers may be asked to attend a meeting with their child's Head of Year, Senior Leader or the Principal if lateness persists and becomes a concern. Persistent lateness will incur further sanctions. If a student is late because of a medical appointment, evidence of the appointment will be needed. A dated appointment card will suffice.

Reading

All students are encouraged to read at least one book for pleasure every two weeks. All students should carry a reading book with them.

Religious Education

RE is a compulsory part of the curriculum and is one of our core subjects. All students receive 10% of our curriculum time per week for all years and it is a compulsory GCSE which is studied in Years 9 – 11.



General information continued

Reporting Progress

Tracking takes place 3 times a year. Parents can access data and full details can be found on the school website, under Parent Information/Homework

Retreat Programme

A retreat is a time of prayerful reflection on our lives. Students are regularly given the opportunity to go on retreat during their time at St Paul's.

Rewards and Sanctions

Reward is part of the celebration of a student's talents, commitment and achievement. Reward takes many forms – an affirming word by a teacher, the satisfaction of acquiring a new skill or the enjoyment of learning. It is part of the whole-school philosophy of having high expectations of students. We encourage our staff to regularly award positive points seeking opportunities to praise students for their behaviour, achievement and effort.

Positive Praise will be implemented in a number of ways which typically include:

- Verbal praise or comment on written work
- Praise points
- Good Attendance Certificates
- Character Value Certificates
- Referral to Head of Department/Head of Faculty
- Referral to Head of Year, attached member of the SLT or the Principal
- Recognition in assemblies including through presentation of a certificate
- A letter of praise sent home via email/post
- A phone call home
- Subject Badges
- Being awarded a Principal's Pen
- KS3/KS4 Awards Evening

Students are expected to follow the school rules at all times. In the first instance, those who do not, will be reminded of the school's expectations by members of staff. If this does not lead to an improvement, parents will be contacted and sanctions may apply.



General information continued

Rewards and Sanctions continued

The disciplinary procedure will be worked through in a logical and sequential manner by all staff when addressing behaviour that falls short of expectation. We use the **Choice – Chance – Consequence** system. Sanctions will be proportionate to the incident they seek to redress. The Governors have agreed that the following sanctions may be used in the school:

- verbal coaching by subject teacher/Form Tutor/Head of Year
- moving a student within class
- extra work or repeating unsatisfactory work, until it meets the required standard
- short detention at lunch or break
- detention after school
- a school-based community service
- writing a letter of apology
- withdrawal of break or lunchtime privileges for a fixed period of time
- withholding participation in educational visits or sports events
- confiscation or removal of personal items
- paying for or making a contribution towards, broken/damaged property
- specific subject report
- pastoral report/cross-curricular report
- report to the Principal or another Senior Leader or Teacher
- removal from a class or curriculum area for a fixed period
- home contact
- placement in “isolation” either in school or at a partner school
- fixed-term suspension
- Governors’ Disciplinary Panel
- permanent exclusion

Full details of the school Behaviour Policy can be found on the school website <https://www.st-pauls.leicester.sch.uk/policies/>



General information continued

Safeguarding

The school has a statutory responsibility to share any concerns it might have about a child in need of protection with other agencies and in particular police, health and children's services. Schools are not able to investigate concerns but have a legal duty to refer them. In most instances, the school will be able to inform the parents/carers if they need to make a referral. However, sometimes the school is advised by Children's Social Care or police that the parent/carer cannot be informed whilst they investigate the matter. We understand the anxiety parents/carers understandably feel when they are not told about any concerns from the outset. The school follows legislation that aims to act in the best interests of the child. The schools Designated Safeguarding Lead is Mrs. Hodgson, Senior Assistant Principal.

The school endeavours to ensure the safety of all students. Parents are asked to support the school, especially by telling the school about any situation which may impact on their child's welfare. Our safeguarding policy can be found on the school website.

School Council

St Paul's has a School Council which meets each term. The Council discusses matters raised by the Year Council. School Councillors are elected by members of their form and serve for one year.

School Health Services

Students have access to a school nurse who visits regularly. Referrals can be made through the Head of Year.



General information continued

School Meals

Students can either bring a packed lunch or eat a school meal. The school operates a restaurant system from “Lydia’s”, offering a wide range of both hot and cold food with meat and vegetarian options (meat products are Halal). Pupils are made aware of both the menu choices and prices so they can select, what they would like to eat. We also have a Café for cold sandwiches, wraps and snacks.

We are as helpful as possible over dietary needs and we comply with all Government requirements for nutritional standards, that apply to school meals.

School Office

All student and school administration is dealt within the School Office.

The School Office deals with the following:

- Co-ordination of all school trips
- Return of data forms and medical forms
- All Arbor payment enquiries
- Pupil Premium queries
- Distribution of pre-ordered resources such as revision guides and text books, and tickets for school productions and events
- Replacement of school ties, stationery and lanyards
- Issue of locker keys and replacement of lost keys
- School communication
- Telephone calls home in the event of a fixture or rehearsal being cancelled and a pick-up having to be arranged.



General information continued

Special Educational Needs and Disabilities

Learning Development at St. Paul's is led by the school SENDCo, Miss L Boyle (Special Educational Needs Coordinator).

Teaching Assistants working within Learning Development carry out a variety of tasks. These include:

- Supporting students in the classroom in small groups or a 1-1 basis
- Liaising with teachers
- Supporting students on outings
- Withdrawing small groups for literacy, numeracy or social skills

The department has a designated 'Learning Hub' where withdrawal groups for literacy and numeracy take place, as well as an additional facility where students can go during morning break and at lunch time to eat, meet with other students, read or play games.

Parents are kept fully informed of any concerns regarding a pupil's progress and possible inclusion, onto the school's Special Educational Needs register.

Parents and carers who have concerns or queries about their child, are invited to contact the SENDCo at any time during the day to discuss their concerns or, arrange a meeting.

RSE

Relationships and Sex Education is delivered during PHSE lessons, RE lessons and cross curricular. We follow the TenTen programme. Parents will be given a login to view the resources we use. All students take part in the RSE programme further information is on our school website:

<https://www.st-pauls.leicester.sch.uk/curriculum/responsible-adulthood-programme/>



General information continued

Student Medical Conditions and Medicines

Parents/carers of students with a recognised medical condition (including allergies), must declare it on the data collection form and tell their Head of Year, unless it is outlined in an Education, Health and Care plan (EHCP). Parents/carers should keep the school updated of any changes.

Some chronic or acute conditions require the child to carry equipment such as an inhaler or epi-pen. Training is given to school staff and to the student.

Should you wish for your child to have medicine administered during school hours, please send a letter to the school office. We must be kept informed and updated about any medical problem. If your child has an EPI-pen, we advise that a spare one should be kept with First Aid, in school.

This ensures that medicines are kept secure and reduces the risks of students inadvertently coming to harm. Arrangements for the student to come to get their medicine will then be put in place at an appropriate time, as advised in writing, or break time or lunchtime. Please note that school does not keep a stock of medicines and may not supply pain killers.

Advice should be sought from the GP by the parents/carers about any long term, regular use of any medicine; the school may ask for an advice note from the GP or hospital as appropriate. The school nursing service may also be consulted.

Details of the school's policy for the administration of medication in school, can be found on the school website under General Information/School Policies/First Aid

A variety of pastoral measures are in place to support students with short term issues or long term medical conditions, such as time out cards, pastoral support, counselling. These include pastoral support from the Chaplain and pastoral support team.

Transition from Primary School

Contact will have been made with primary schools before students make the transition to St. Paul's; this enables the team, to prepare for the new Year 7 intake and make arrangements to meet their needs.

On arrival at St. Paul's, Year 7 pupils undertake several assessments to establish their current level of ability in literacy, numeracy and cognitive skills. The results of these assessments will help to identify where support and interventions may be required.



General information continued

Vehicles on site

Parents are not allowed to drive onto the school site. There is a barrier system in operation. Parking is available on the side roads off Spencefield Lane, Welland Vale Road and Downing Drive. Parents are asked to drop off and pick up outside the school (Spencefield Lane) and to **NOT** drive onto the school site. Only those parents who have been issued with a pass, are permitted to drive onto the school site; these passes are only issued upon certified medical evidence. If you feel that your child meets the criteria for a pass, please contact Mrs. Moss, PA to the Principal, via email to cmoss@st-pauls.leicester.sch.uk The number of cars driving through causes a huge safety risk to the students. If a member of staff asks you to move your car off site, then please do so. We really must work together to ensure the safety of our young people. Additionally, when collecting students from after school clubs, after 4pm, parents should not be parking along the kerb outside reception; car park spaces should be available at this time so please use them.





Term dates 2025 - 2026

Advent / Autumn Term	
School opens	Thursday 28 August (Y7 and Y12 only)
	Friday 29 August (all students)
Autumn half term holiday	Monday 20 October - Friday 24 October 2025
Staff training day	Friday 21 November 2025 (school closed to students)
School closes	Friday 19 December 2025
Lent / Spring Term	
School opens	Monday 5 January 2026
Spring half term holiday	Monday 16 February - Friday 20 February 2026
School closes	Friday 27 March 2026
Pentecost / Summer Term	
School opens	Monday 13 April 2026
May Day	Monday 4 May 2026 (school closed)
Summer half term holiday	Monday 25 May - Friday 29 May 2026
School closes	Friday 10 July 2026 (at 12:30pm)

PLEASE NOTE: these dates are the current published term dates.



Privacy notice

How we use student information

St Paul's Catholic School collects and holds personal information, about students and may also receive information about them from their previous school, local authority, partner organisations (such as the Police, NHS) and/or the Department for Education (DfE).

What data do we use:

The types of data the school holds includes:

- Personal information (such as name, unique student number, contact details and address(es))
- Characteristics (such as ethnicity, language, nationality, country of birth and free school meal eligibility)
- Attendance information (such as sessions attended, number of absences and absence reasons)
- Assessment information (such as teacher assessments, test and examination results)
- Relevant medical information
- Information relating to Special Educational Needs (SEND)
- Behavioural information (such as number of temporary exclusions)
- Post 16 learning information

Why we collect and use this information:

We use the student data:

- to support student learning
- to monitor and report on student progress
- to provide appropriate pastoral care
- to assess the quality of our services
- to comply with the law regarding data sharing
- to undertake marketing and promotional activities



Privacy notice continued

What allows us to use this information

The Education Acts are the main laws, that allows us to use data without the consent of the pupil or their parent/guardian. Schools have a 'legal obligation' or have 'official authority', to process the data.

In some cases the school may enter into a contract with you.

Sometimes consent will be required e.g. for using a child's photograph in promotional materials.

You can find a list of reasons why we can use pupil information, including sharing data with the local authority, in Appendix A.

Collecting student information

Whilst the majority of student information you provide to us is mandatory, some of it is provided to us on a voluntary basis. In order to comply with the General Data Protection Regulation, we will inform you whether you are required to provide certain student information to us, or if you have a choice in this.

Storing student data

We hold student data until their 25th birthday.

Please see **[www.st-pauls.leicester.sch.uk/General Information](http://www.st-pauls.leicester.sch.uk/General%20Information)**

Contact

If you would like to discuss anything in this privacy notice, please contact:
Antoinette Bouwens **abouwens@aquinas-cmat.org**



Contact us



Spencefield Lane, Evington, Leicester, LE5 6HN



0116 241 4057

Option 1 - student absence

Option 2 - admissions



office@st-pauls.leicester.sch.uk



www.st-pauls.leicester.sch.uk



[@stpaulsleicester](#) / [@stpaulsleicester6thform](#)